

The Fresco

Cottage Elevation



Floor plan shown is Artist's Rendering. Pricing, plans, and features are subject to change at anytime without notice. CBC1258208





The Fresco

Farmhouse Elevation



Floor plan shown is Artist's Rendering. Pricing, plans, and features are subject to change at anytime without notice. CBC1258208



The Fresco

Craftsman Elevation



Floor plan shown is Artist's Rendering. Pricing, plans, and features are subject to change at anytime without notice. CBC1258208





The Fresco

Coastal Elevation

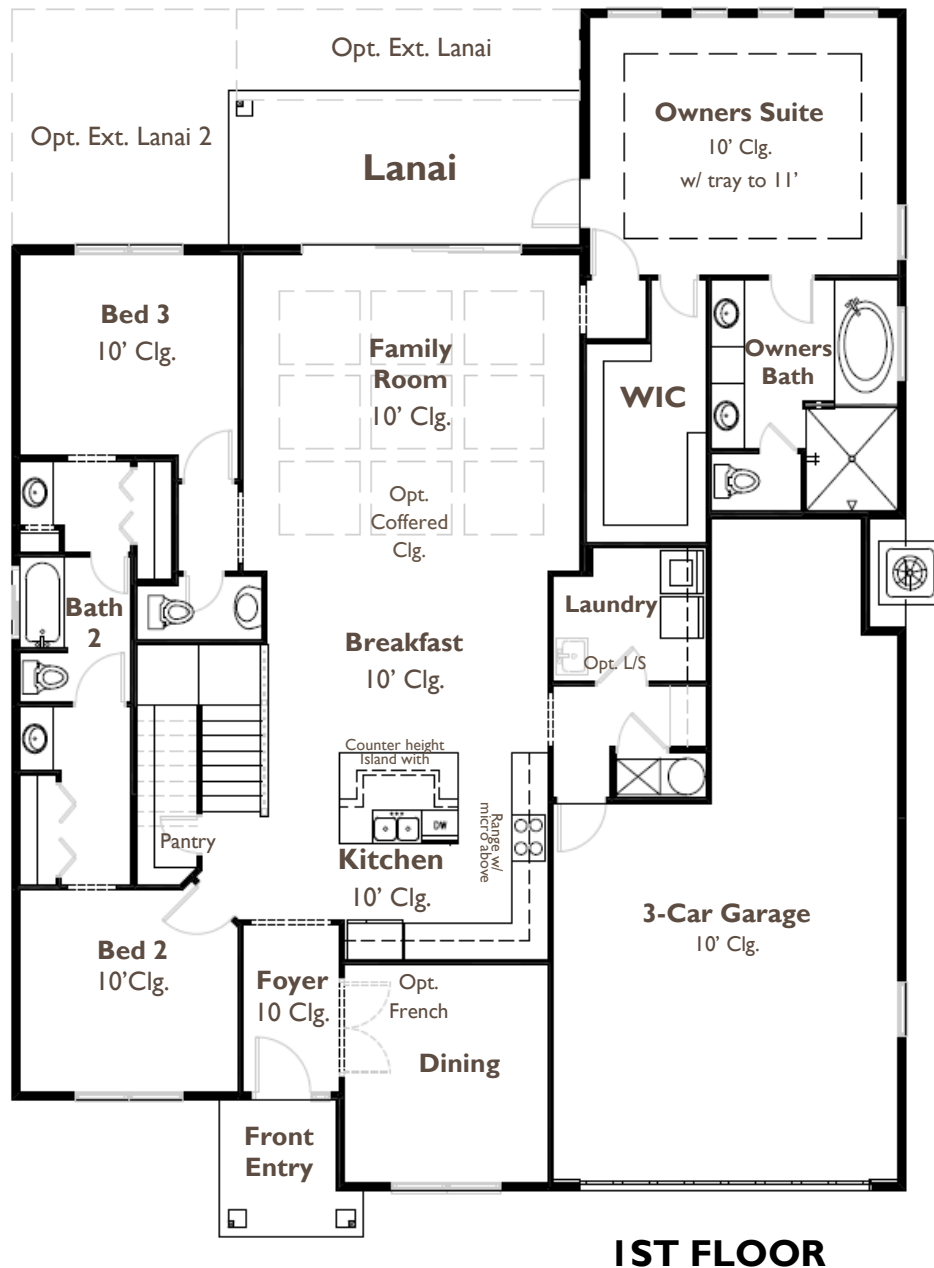


Floor plan shown is Artist's Rendering. Pricing, plans, and features are subject to change at anytime without notice. CBC1258208



The Fresco

4 - 5 BEDROOM | 3.5 - 4.5 BATH | 3 CAR GARAGE



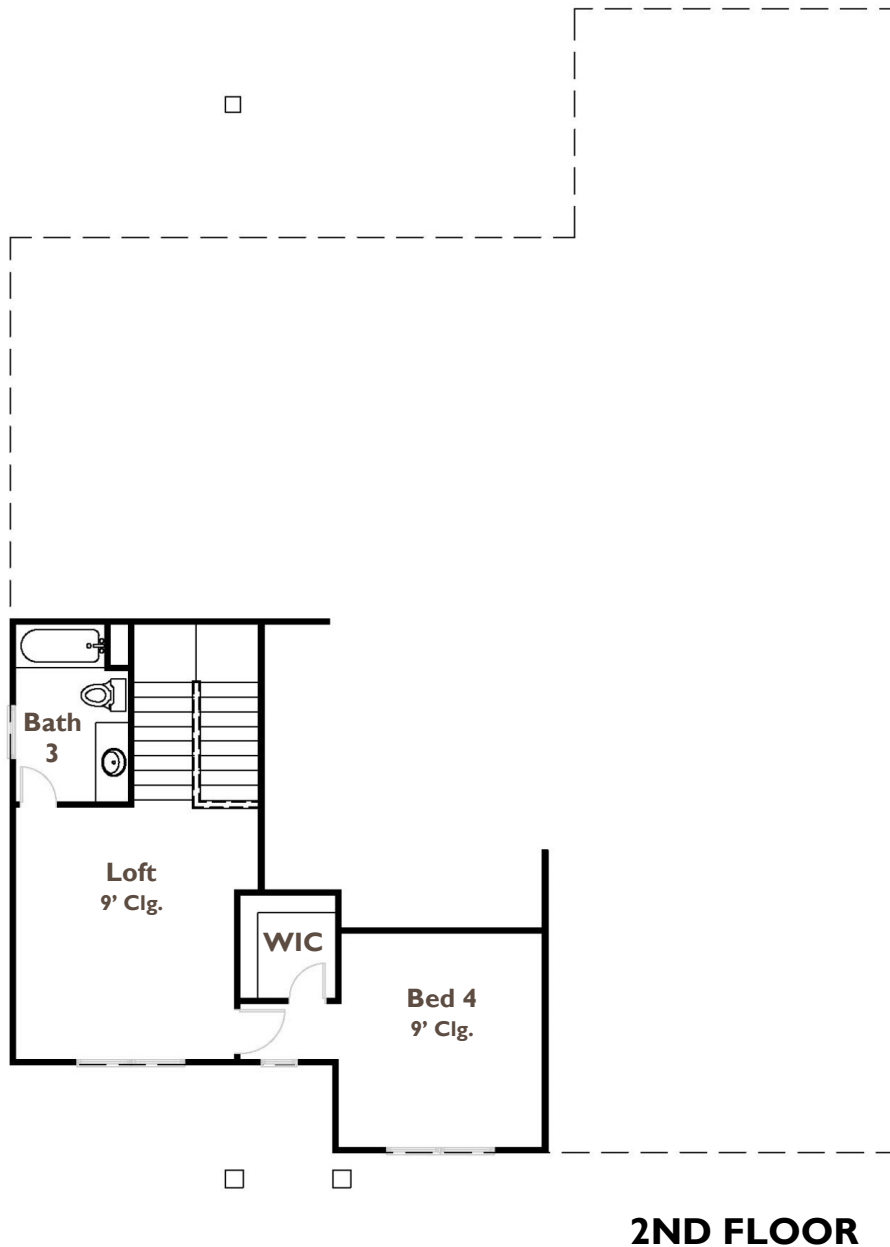
Floor plan shown is Artist's Rendering. Pricing, plans, and features are subject to change at anytime without notice. CBC1258208





The Fresco

2,610 - 3,067 SQUARE FOOT | 49' WIDE X 67' DEEP

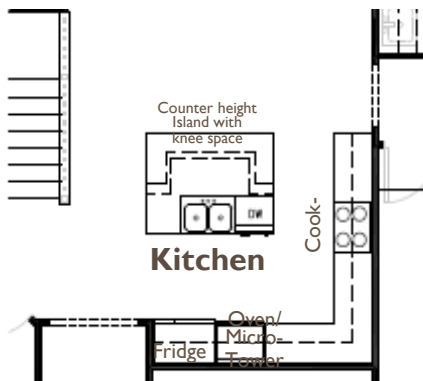


Floor plan shown is Artist's Rendering. Pricing, plans, and features are subject to change at anytime without notice. CBC1258208

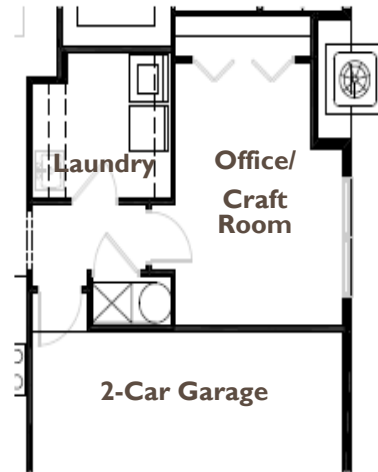


The Fresco

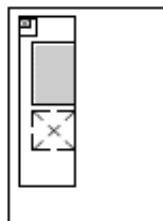
FLEXIBLE OPTIONS



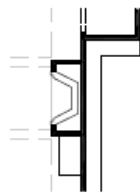
Opt. Gourmet Kitchen with cook-top and oven/micro tower



**Opt. Office or Craft Room
i.l.o. 3rd-Car Garage**



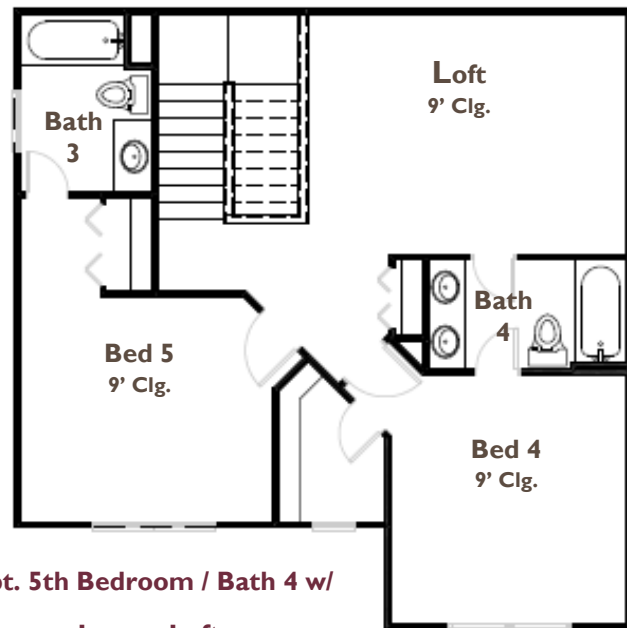
Opt. Summer Kitchen



Opt. F/P at Familyroom



Opt. F/P at Lanai



**Opt. 5th Bedroom / Bath 4 w/
Larger Loft**