

THE HOLLY RIDGE PLAN



NEO-CLASSIC ELEVATION

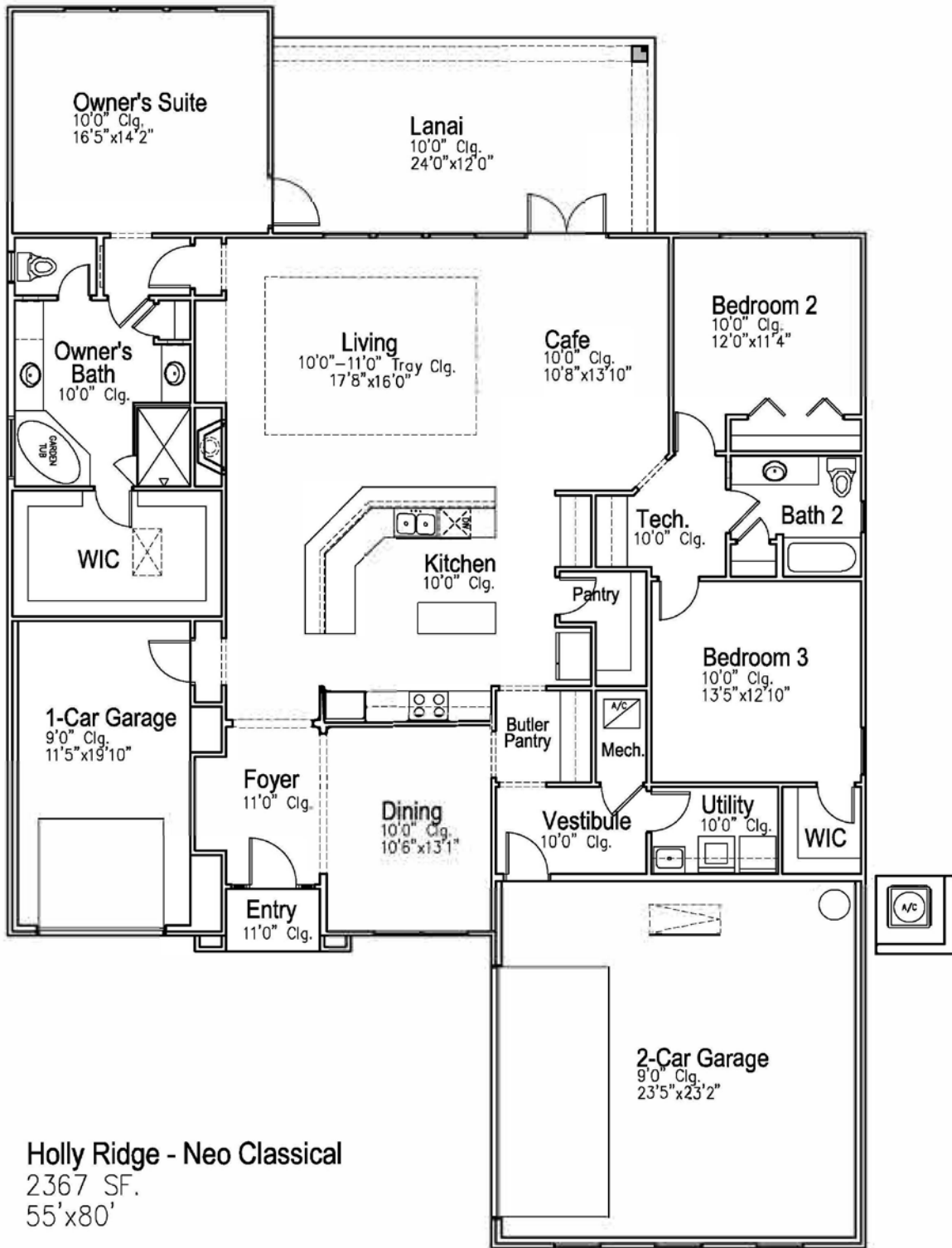


CRAFTSMAN ELEVATION



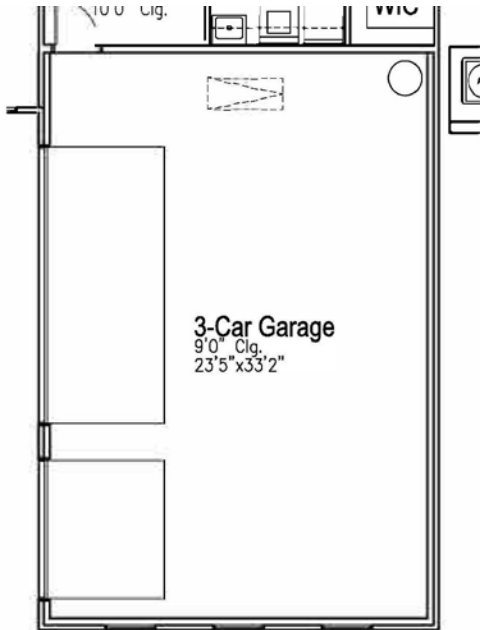
TUSCAN ELEVATION



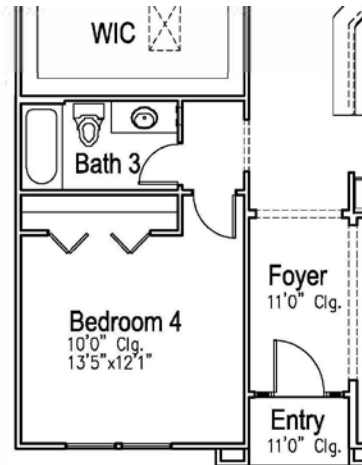


Holly Ridge - Neo Classical
 2367 SF.
 55' x 80'

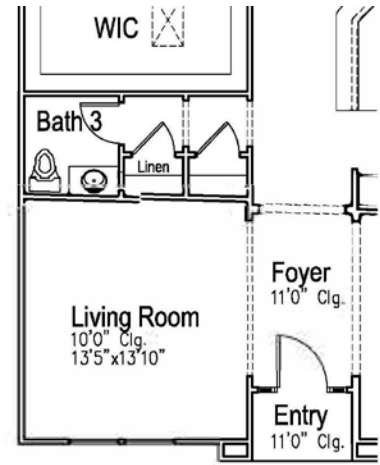




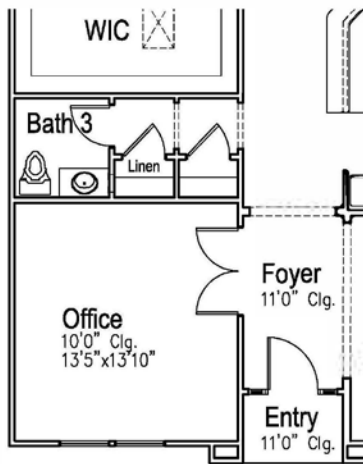
Option 2
3-Car Garage



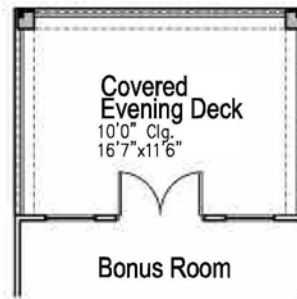
Option 3
Bedroom 4 ILO 1-Car Garage



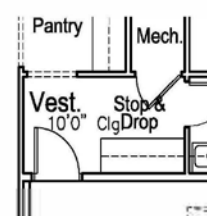
Option 4
Living Room ILO 1-Car Garage



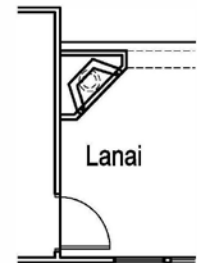
Option 5
Office ILO 1-Car Garage



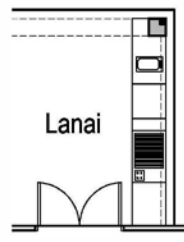
Option 6
Covered Evening Deck



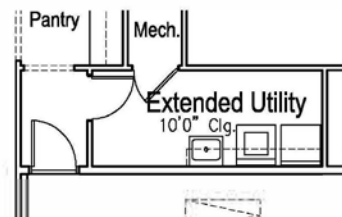
Option 7
Stop & Drop



Option 8
Lanai Fireplace



Option 9
Summer Kitchen



Option 10
Extended Laundry

THE HOLLY RIDGE PLAN

